

Practical / tabletop task

Identify the parts of the canine skeleton

Ambassador notes

This task could be incorporated with a talk or session on a related topic – for example, a dog with a fractured leg or a dog requiring radiography.

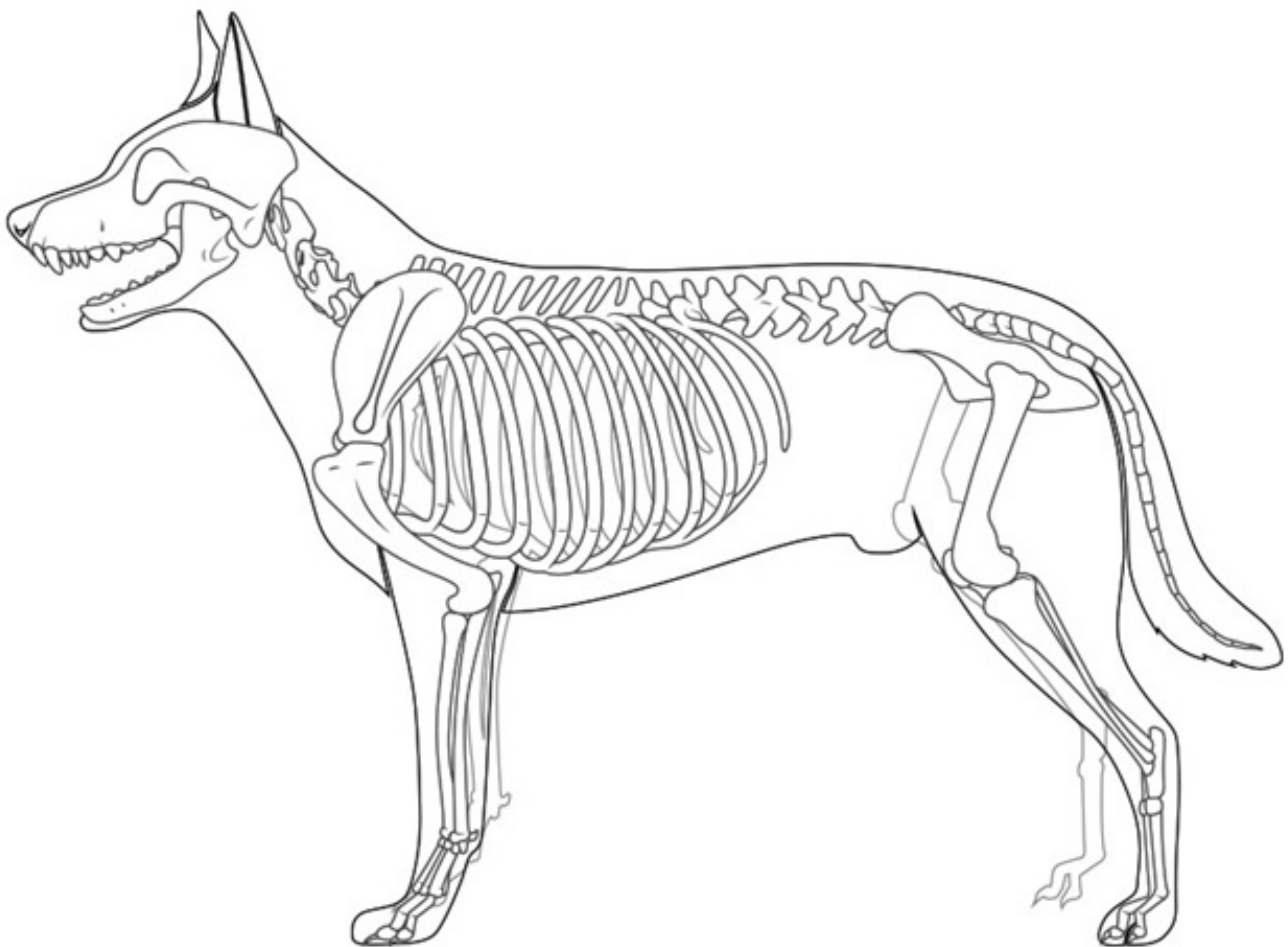
The difficulty of the terms used should be tailored to the age-group of the audience, and you can take out any more difficult terms and add simpler ones.

You can expand upon and discuss the terms as you work through this task.

Ask questions and invite discussion - get the children to identify the same bone on their bodies, ask how they might be different on different breeds of dog – to make the task more memorable.

Practical / tabletop task

Identify the parts of the canine skeleton



Skull

Ribs

Humerus

Scapular

Lumbar

Metatarsus

Spinal vertebrae

(Cervical, thoracic, lumbar, coccygeal)

Sacrum

Orbit

Femur

Patella

Phalanges

Radius

Tibia
